



Kavo



1b



2



1a



1c

- 1 a. 36X22 Kavo Vanity in Velvet on Maple
- b. 36X30 Kavo Medicine Cabinet in Velvet on Maple with Optional Crown Molding
- c. 18X12 Kavo Tall Cabinet in Velvet on Maple with optional Crown Molding
- 2 Optional Concealed Bottom Drawers

Kavo

BASE OPTIONS

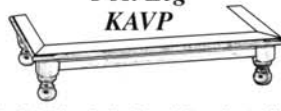
When ordering the Post Leg, Base Option, replace **KAVK** in model with **KAVP**.

**Kick Base
KAVK**



List Prices.
(Shown Below)

**Post Leg
KAVP**



(Adds 2 1/2" to the height of the selected item)

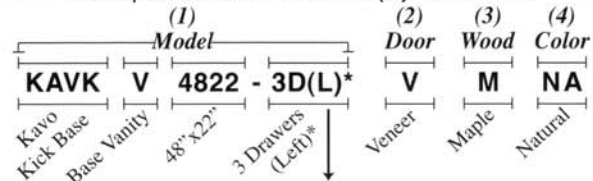
ADD TO LIST PRICE:

Oak	Maple	Cherry
\$340	\$370	\$400

TO ORDER, SPECIFY THE FOLLOWING:

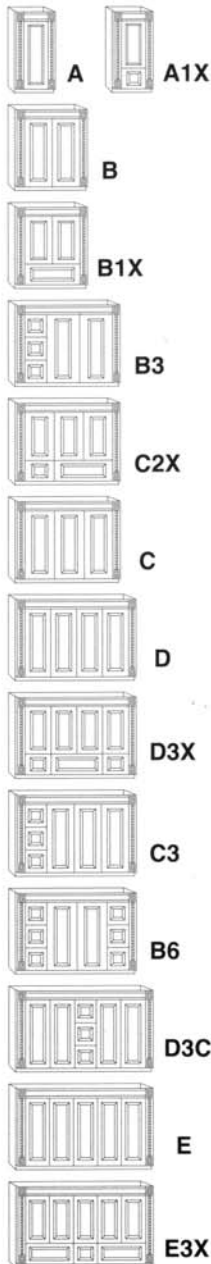
- Model:** See "Model" column on price list below.
- Door Style:** { **V:** Veneer } - { **R:** Raised Panel }
- { **S:** Shaker } - { **B:** Beaded }
(see page E at the beginning of the catalog).
- Wood:** { **O:** Oak } - { **M:** Maple } - { **C:** Cherry }
- Color:** (See page D at the beginning of the catalog)

Example: **KAVKV4822-3D(L) V M NA**



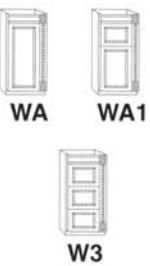
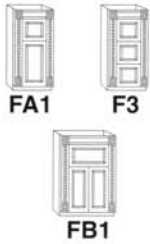
*For Right Drawers replace (L) with (R).

Kavo Kick Base (KAVK)



Ref	Model	Size in inches (W x D)	Oak			Maple			Cherry		
			Veneer	Shaker	Beaded	Veneer	Shaker	Beaded	Veneer	Shaker	Beaded
V: Base Vanities - 31 3/4" Height											
A	KAVKV1917 (L or R)	17 3/4 x 16 1/2	448	498	547	479	533	586	527	585	644
A1X	KAVKV1917-BD (L or R)	17 3/4 x 16 1/2	498	554	609	533	593	652	586	651	716
B	KAVKV2422 or 19	23 1/2 x 21 1/4 or 18 1/2	567	630	693	608	675	743	668	743	817
B1X	APOKV2422-BD or 19	23 1/2 x 21 1/4 or 18 1/2	631	701	771	675	750	825	743	825	908
B	KAVKV3022 or 19	29 1/2 x 21 1/4 or 18 1/2	672	746	821	647	719	791	759	844	928
B1X	KAVKV3022-BD or 19	29 1/2 x 21 1/4 or 18 1/2	725	805	886	775	861	947	852	946	1041
B	KAVKV3622	35 1/2 x 21 1/4	911	1013	1114	956	1063	1169	1094	1215	1337
B1X	KAVKV3622-BD	35 1/2 x 21 1/4	1013	1125	1238	1063	1181	1299	1215	1350	1485
B3	KAVKV3622-3D(L) or (R)*	35 1/2 x 21 1/4	1271	1413	1554	1333	1481	1629	1519	1688	1856
C	KAVKV4222	41 1/2 x 21 1/4	1203	1336	1470	1266	1406	1547	1326	1474	1621
C2X	KAVKV4222-BD	41 1/2 x 21 1/4	1328	1475	1623	1406	1563	1719	1474	1638	1801
B3	KAVKV4222-3D(L) or (R)*	41 1/2 x 21 1/4	1554	1726	1899	1610	1789	1968	1801	2001	2201
D	KAVKV4822	47 1/2 x 21 1/4	1290	1434	1577	1446	1606	1767	1620	1800	1980
D3X	KAVKV4822-BD	47 1/2 x 21 1/4	1434	1594	1753	1603	1781	1959	1800	2000	2200
C3	KAVKV4822-3D(L) or (R)*	47 1/2 x 21 1/4	1594	1771	1948	1753	1948	2142	1928	2143	2357
B6	KAVKV4822-6D	47 1/2 x 21 1/4	1835	2039	2243	2094	2326	2559	2332	2591	2850
D	KAVKV5422	53 1/2 x 21 1/4	1400	1555	1711	1512	1680	1848	1717	1908	2098
D3X	KAVKV5422-BD	53 1/2 x 21 1/4	1556	1729	1902	1681	1868	2054	1908	2120	2332
C3	KAVKV5422-3D(L) or (R)*	53 1/2 x 21 1/4	1834	2038	2241	2017	2241	2465	2219	2465	2712
B6	KAVKV5422-6D	53 1/2 x 21 1/4	1949	2165	2382	2144	2383	2621	2465	2739	3013
D	KAVKV6022	59 1/2 x 21 1/4	1724	1915	2107	1969	2187	2406	2232	2480	2728
D3X	KAVKV6022-BD	59 1/2 x 21 1/4	1915	2128	2341	2187	2430	2673	2481	2756	3032
C3	KAVKV6022-3D(L) or (R)*	59 1/2 x 21 1/4	2092	2324	2556	2415	2684	2952	2570	2856	3142
D3C	KAVKV6022-3DC	59 1/2 x 21 1/4	2092	2324	2556	2415	2684	2952	2570	2856	3142
B6	KAVKV6022-6D	59 1/2 x 21 1/4	2303	2559	2815	2602	2891	3180	2831	3146	3461
D	KAVKV6622	65 1/2 x 21 1/4	1814	2016	2218	2072	2303	2533	2350	2611	2872
D3X	KAVKV6622-BD	65 1/2 x 21 1/4	2016	2240	2464	2303	2559	2815	2612	2902	3192
C3	KAVKV6622-3D(L) or (R)*	65 1/2 x 21 1/4	2202	2447	2692	2490	2766	3043	2706	3007	3308
D3C	KAVKV6622-3DC	65 1/2 x 21 1/4	2202	2447	2692	2490	2766	3043	2706	3007	3308
B6	KAVKV6622-6D	65 1/2 x 21 1/4	2422	2691	2960	2739	3043	3347	2977	3307	3638
E	KAVKV7222	71 1/2 x 21 1/4	1910	2122	2335	2182	2425	2667	2475	2750	3025
E3X	KAVKV7222-BD	72 1/2 x 21 1/4	2123	2359	2595	2425	2695	2964	2750	3055	3361
D3C	KAVKV7222-3DC	71 1/2 x 21 1/4	2318	2576	2834	2621	2912	3203	2851	3167	3484

Kavo Kick Base (KAVK)



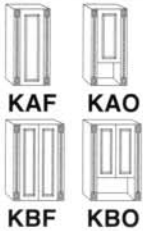
Ref	Model	Size in inches (W x D)	Oak			Maple			Cherry		
			Veneer	Raised Panel Shaker	Beaded	Veneer	Raised Panel Shaker	Beaded	Veneer	Raised Panel Shaker	Beaded
S: Single Base Vanities - 31 3/4" Height											
FA1	KAVKS1522-1D or 19	14 3/4 x 21 1/4 or 18 1/2	654	726	799	693	770	847	804	894	983
F3	KAVKS1522-3D or 19	14 3/4 x 21 1/4 or 18 1/2	727	808	888	771	856	942	894	994	1093
FA1	KAVKS1822-1D or 19	17 3/4 x 21 1/4 or 18 1/2	709	788	866	744	826	909	936	1040	1144
F3	KAVKS1822-3D or 19	17 3/4 x 21 1/4 or 18 1/2	788	875	963	827	919	1011	1041	1156	1272
FB1	KAVKS2422-1D or 19	23 1/2 x 21 1/4 or 18 1/2	753	836	920	791	879	967	992	1103	1213
F3	KAVKS2422-3D or 19	23 1/2 x 21 1/4 or 18 1/2	837	930	1023	881	979	1077	1105	1228	1350

W: Wing Base Vanities - 31 3/4" Height - {Specify Left (L) or Right (R)}											
WA	KAVKW1219(L) or (R)	12 x 18 1/2	588	654	719	623	693	762	723	804	884
WA1	KAVKW1219-1D(L) or (R)	12 x 18 1/2	654	726	799	693	770	847	804	894	983
W3	KAVKW1219-3D(L) or (R)	12 x 18 1/2	727	808	888	771	856	942	894	994	1093
WA	KAVKW1519(L) or (R)	14 3/4 x 18 1/2	614	683	751	647	719	791	747	830	913
WA1	KAVKW1519-1D(L) or (R)	14 3/4 x 18 1/2	683	759	835	719	799	879	830	923	1015
W3	KAVKW1519-3D(L) or (R)	14 3/4 x 18 1/2	759	844	928	799	888	976	923	1025	1128
WA	KAVKW1819(L) or (R)	17 3/4 x 18 1/2	645	716	788	678	754	829	1121	1245	1370
WA1	KAVKW1819-1D(L) or (R)	17 3/4 x 18 1/2	717	796	876	754	838	921	871	968	1064
W3	KAVKW1819-3D(L) or (R)	17 3/4 x 18 1/2	797	885	974	838	931	1024	969	1076	1184

TC: Tall Cabinets - 80" Height											
TB1	KAVKTC1515-1D	14 3/4 x 15	1448	1609	1770	1521	1690	1859	1913	2126	2338
TB2	KAVKTC1515-2D	14 3/4 x 15	1599	1777	1955	1637	1819	2001	2135	2373	2610
TA4	KAVKTC1515-4D	14 3/4 x 15	1748	1942	2136	1835	2039	2242	2308	2564	2821
TB1	KAVKTC1522-1D or 19	14 3/4 x 21 1/4 or 18 1/2	1547	1718	1890	1623	1803	1984	2045	2273	2500
TB2	KAVKTC1522-2D or 19	14 3/4 x 21 1/4 or 18 1/2	1678	1865	2051	1762	1958	2154	2220	2467	2713
TA4	KAVKTC1522-4D or 19	14 3/4 x 21 1/4 or 18 1/2	1824	2027	2230	1915	2128	2341	2413	2681	2949
TB1	KAVKTC1815-1D	17 3/4 x 15	1524	1693	1863	1601	1779	1956	2014	2238	2462
TB2	KAVKTC1815-2D	17 3/4 x 15	1683	1870	2057	1724	1915	2107	2248	2498	2747
TA4	KAVKTC1815-4D	17 3/4 x 15	1840	2044	2248	1931	2146	2361	2429	2699	2969
TB1	KAVKTC1822-1D or 19	17 3/4 x 21 1/4 or 18 1/2	1628	1809	1990	1709	1898	2088	2153	2392	2632
TB2	KAVKTC1822-2D or 19	17 3/4 x 21 1/4 or 18 1/2	1767	1963	2159	1855	2061	2267	2337	2597	2856
TA4	KAVKTC1822-4D or 19	17 3/4 x 21 1/4 or 18 1/2	1920	2134	2347	2016	2240	2464	2540	2822	3105
TD1	KAVKTC2415-1D	23 1/2 x 15	1624	1804	1985	1705	1894	2083	2140	2378	2616
TD2	KAVKTC2415-2D	23 1/2 x 15	1663	1848	2033	1746	1940	2134	2199	2444	2688
TB4	KAVKTC2415-4D	23 1/2 x 15	1920	2134	2347	2016	2240	2464	2540	2822	3105
TD1	KAVKTC2422-1D or 19	23 1/2 x 21 1/4 or 18 1/2	1696	1885	2073	1781	1979	2177	2245	2494	2744
TD2	KAVKTC2422-2D or 19	23 1/2 x 21 1/4 or 18 1/2	1770	1967	2163	1858	2064	2271	2321	2579	2837
TB4	KAVKTC2422-4D or 19	23 1/2 x 21 1/4 or 18 1/2	1992	2213	2434	2092	2324	2556	2653	2948	3243

ST: Semi Tall Cabinets - 48" Height											
SA1	KAVKST1515-1D	14 3/4 x 15	1212	1347	1481	1273	1414	1555	1400	1555	1711
SA1	KAVKST1519-1D	14 3/4 x 18 1/2	1277	1419	1561	1341	1490	1639	1475	1639	1803
SA2	KAVKST1515-2D	14 3/4 x 15	1398	1554	1709	1468	1631	1795	1615	1795	1974
SA2	KAVKST1519-2D	14 3/4 x 18 1/2	1593	1770	1947	1673	1859	2044	1840	2044	2249
SA1	KAVKST1815-1D	17 3/4 x 15	1276	1418	1559	1340	1488	1637	1473	1637	1801
SA1	KAVKST1819-1D	17 3/4 x 18 1/2	1339	1488	1636	1406	1562	1718	1546	1718	1890
SA2	KAVKST1815-2D	17 3/4 x 15	1473	1636	1800	1546	1718	1890	1701	1890	2079
SA2	KAVKST1819-2D	17 3/4 x 18 1/2	1547	1719	1891	1624	1805	1985	1787	1985	2184

Kavo Kick Base (KAVK)



KAF KAO
KBF KBO

Ref	Model	Size in inches (W x D)	Oak			Maple			Cherry		
			Veneer	Raised Panel	Shaker	Veneer	Raised Panel	Shaker	Veneer	Raised Panel	Shaker
COT: Cabinets Over Toilet - 32" Height											
KAF	KAVCOT-FD 18	17 3/4 x 8	502	558	613	537	597	656	591	656	722
KAO	KAVCOT-OS 18	17 3/4 x 8	534	594	653	572	635	699	629	699	769
KBF	KAVCOT-FD 24	23 1/2 x 8	568	631	694	608	675	743	669	743	817
KBO	KAVCOT-OS 24	23 1/2 x 8	608	675	743	650	722	794	715	794	874

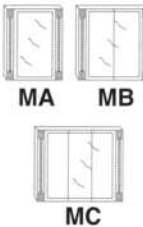
CM: Crown Molding - 2 1/4" Height



CM

Ref	Model	Size in inches (W x D)	Tall Cabinet			C.O.T.		
			Oak	Maple	Cherry	Oak	Maple	Cherry
CM	KAVCM12(TC) or (COT)	(Crown molding adds	220	231	243			
CM	KAVCM15(TC) or (COT)	4 3/4" to the width of the	240	252	265			
CM	KAVCM18(TC) or (COT)	selected item, and	250	263	276	185	198	210
CM	KAVCM24(TC) or (COT)	2 3/8" to the depth.)	260	273	287	198	210	222

MC: Surface Medicine Cabinets - 30" Height



MA MB
MC

Ref	Model	Size in inches (W x D)	Oak		Maple		Cherry	
			Plain	Crown	Plain	Crown	Plain	Crown
MA	KAVMC2430	24 x 5 3/4	811	1009	868	1078	954	1176
MB	KAVMC3030	30 x 5 3/4	910	1120	974	1196	1071	1306
MC	KAVMC3630	36 x 5 3/4	1129	1351	1163	1398	1239	1486
MC	KAVMC4230	42 x 5 3/4	1476	1711	1495	1742	1610	1869
MC	KAVMC4830	48 x 5 3/4	1578	1825	1600	1859	1725	1997
MC	KAVMC5430	54 x 5 3/4	1735	2007	1760	2045	1898	2197

WM: Wall Mirrors - 30" Height



M

Ref	Model	Size in inches (W x H)	Oak		Maple		Cherry	
			Plain	Crown	Plain	Crown	Plain	Crown
M	KAVWM2430	24 x 30	568	766	607	817	668	890
M	KAVWM3030	30 x 30	637	847	682	904	750	985
M	KAVWM3630	36 x 30	790	1012	814	1049	867	1114
M	KAVWM4230	42 x 30	1033	1268	1047	1294	1127	1386
M	KAVWM4830	48 x 30	1104	1351	1120	1379	1208	1480

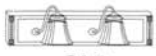
LB: Surface Light Bars - 6" Height



L4

Ref	Model	Size in inches (W x D)	Oak		Maple		Cherry	
			Plain	Crown	Plain	Crown	Plain	Crown
L3	KAVLB24	24 x 5 3/4	453	651	484	694	569	791
L4	KAVLB30	30 x 5 3/4	495	705	529	751	593	828
L5	KAVLB36	36 x 5 3/4	523	745	560	795	658	905
L6	KAVLB42	42 x 5 3/4	576	811	618	865	725	984
L6	KAVLB48	48 x 5 3/4	635	882	679	938	798	1070
L6	KAVLB54	54 x 5 3/4	698	970	746	1031	878	1177

GL: Gooseneck Light Bars - 6" Height



GL2

Ref	Model	Size in inches (W x D)	Oak		Maple		Cherry	
			Plain	Crown	Plain	Crown	Plain	Crown
GL2	KAVGL24	24 x 5 3/4	589	787	629	839	740	962
GL3	KAVGL30	30 x 5 3/4	643	853	688	910	771	1006
GL3	KAVGL36	36 x 5 3/4	680	902	728	963	855	1102
GL4	KAVGL42	42 x 5 3/4	749	984	803	1050	942	1201
GL5	KAVGL48	48 x 5 3/4	825	1072	882	1141	1038	1310
GL5	KAVGL54	54 x 5 3/4	908	1179	970	1255	1141	1440

DIMENSIONS

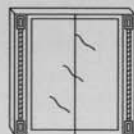
(W) Width, (D) Depth

Medicine Cabinets & Wall Mirrors - 30" Height Ref: M



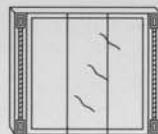
MA

W: 23½"
D: 5¾"



MB

W: 29½"
D: 5¾"



MC

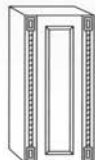
W: 35½", 41½", 47½", 53½"
D: 5¾"



M

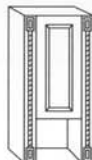
W: 24", 30", 36", 42", 48", 54"
H: 30"

Cabinets Over Toilet - 32" Height Ref: K



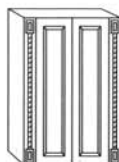
KAF

W: 17¾"
D: 8"



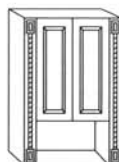
KAO

W: 17¾"
D: 8"



KBF

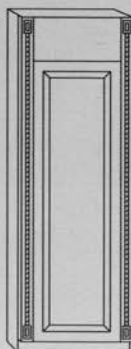
W: 23½"
D: 8"



KBO

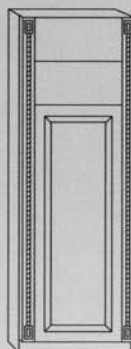
W: 23½"
D: 8"

Semi Tall Cabinets - 48" Height Ref: S



SA1

W: 14¾", 17¾"
D: 15", 18½"



SA2

W: 14¾", 17¾"
D: 15", 18½"

Crown Moldings - 2¼" Height Ref: CM



CM

W: Will match your cabinet size
D: Will match your cabinet size

Lights - 6" Height Ref: L



L4

W: 24"(3*) - 30"(4*) - 36"(5*) - 42"(6*) -
48"(6*) - 54"(6*)
D: 5¾"

*Indicates Number of Lights

Gooseneck Light Bars Ref: GL

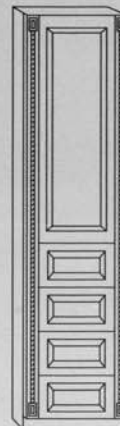


GL2

W: 24"(2*) - 30"(3*) - 36"(3*) - 42"(4*) -
48"(5*) - 54"(5*)
D: 5¾"

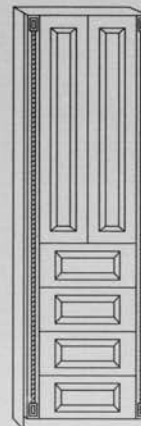
*Indicates Number of Lights

Tall Cabinets - 80" Height Ref: T



TA4

W: 14¾", 17¾"
D: 15", 18½", 21¼"



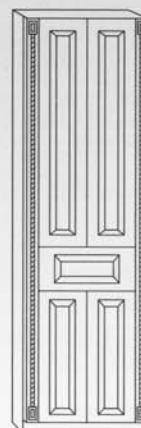
TB4

W: 23½"
D: 15", 18½", 21¼"



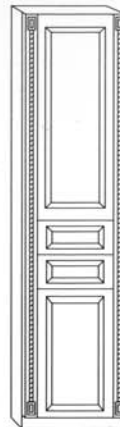
TB1

W: 14¾", 17¾"
D: 15", 18½", 21¼"



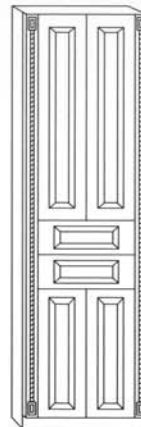
TD1

W: 23½"
D: 15", 18½", 21¼"



TB2

W: 14¾", 17¾"
D: 15", 18½", 21¼"



TD2

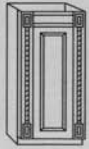
W: 23½"
D: 15", 18½", 21¼"

DIMENSIONS

(W) Width, (D) Depth

Base Vanities - 31 3/4" Height Ref: A, B, C, D, E

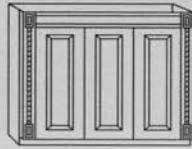
Base Vanities With Doors Only



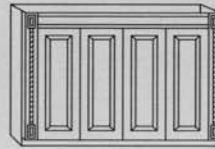
A
W: 17 3/4"
D: 16 1/4"



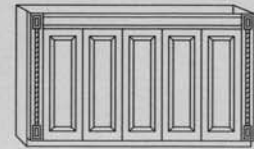
B
W: 23 1/2", 29 1/2", 35 1/2"
D: 21 1/4", 18 1/2"



C
W: 41 1/2"
D: 21 1/4"

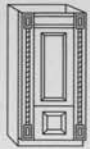


D
W: 47 1/2", 53 1/2", 59 1/2", 65 1/2"
D: 21 1/4"

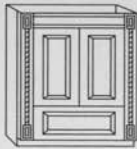


E
W: 71 1/2"
D: 21 1/4"

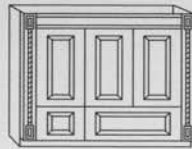
Base Vanities With Doors And Bottom Drawers



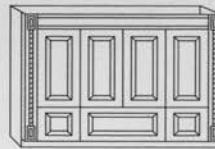
A1X
W: 17 3/4"
D: 16 1/4"



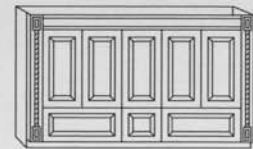
B1X
W: 23 1/2", 29 1/2", 35 1/2"
D: 21 1/4", 18 1/2"



C2X
W: 41 1/2"
D: 21 1/4"

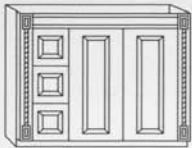


D3X
W: 47 1/2", 53 1/2", 59 1/2", 65 1/2"
D: 21 1/4"



E3X
W: 71 1/2"
D: 21 1/4"

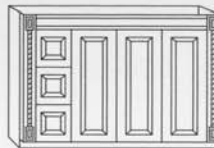
Base Vanities With Doors And Drawers (Left, Right Or Center)



B3
W: 35 1/2", 41 1/2"
D: 21 1/4"



B6
W: 47 1/2", 53 1/2", 59 1/2", 65 1/2"
D: 21 1/4"

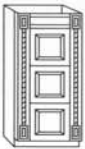


C3
W: 47 1/2", 53 1/2", 59 1/2", 65 1/2"
D: 21 1/4"

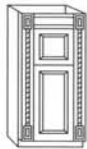


D3C
W: 59 1/2", 65 1/2", 71 1/2"
D: 21 1/4"

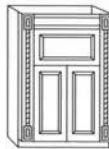
Single Base Cabinets - 31 3/4" Height Ref: F



F3
W: 14 3/4", 17 3/4", 23 1/2"
D: 18 1/2", 21 1/4"

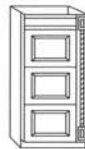


FA1
W: 14 3/4", 17 3/4"
D: 18 1/2", 21 1/4"



FB1
W: 23 1/2"
D: 18 1/2", 21 1/4"

Wing Base Cabinets - 31 3/4" Height Ref: W



W3
W: 12", 14 3/4", 17 3/4"
D: 18 1/2"



WA1
W: 12", 14 3/4", 17 3/4"
D: 18 1/2"



WA
W: 12", 14 3/4", 17 3/4"
D: 18 1/2"



New York Vanity: 1019 Irving Avenue • Ridgewood, NY 11385
Tel.: 718-417-1010 • Fax: 718-386-3045 • www.nyvanity.com • info@nyvanity.com